

## Log on

1. Press the power button.
2. Tap to display the on-screen keyboard then tap your user name and password.

The first time you start the tablet, Windows Setup appears. Follow the instructions to set up your user account.

**TIP:** Press the Security button whenever you want to lock or unlock your tablet; it's just like using Ctrl + Alt + Delete.

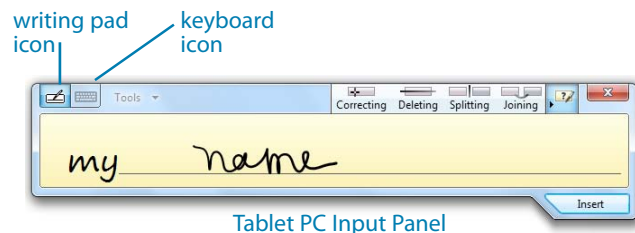
## Use touch and pen (sold separately)

With the CL900 touch-screen display, you can use your finger or a pen (sold separately) to select and enter text. Just as you click and double-click a mouse, you tap and double-tap your finger or pen. To right-click, you tap and hold or press the pen's function button.



## Enter text with the Input Panel

Without a keyboard, you enter text using an on-screen keyboard or writing pad. If you have a pen (which is sold separately), the writing pad comes in handy to fill out forms or jot down notes. You use the Tablet PC Input Panel to enter text with either the keyboard or writing pad. Here's the Input Panel open to the writing pad.



### To open the Input Panel either

- Tap where you want to enter text, such as in a text box, and the Input Panel icon appears. Tap the icon to begin to write or type.
- Tap the tab on the left edge of the display to expand the Input Panel.

The Input Panel opens to whatever tool you used last, the keyboard or the writing pad.

### To switch between the writing pad and keyboard

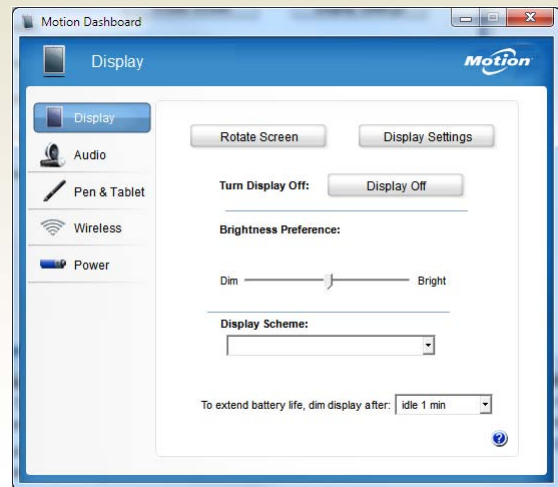
- Tap the appropriate icon.

## Adjust settings with Motion Dashboard

CL900 comes with Motion Dashboard which puts many common tablet-related settings in one convenient place.

### To open the Motion Dashboard either

- From Windows Start menu, select **All Programs > Motion Computing > Motion Dashboard**
- From the notification area, tap the Motion icon



Motion Dashboard

Among the tasks you can do from the Motion Dashboard:

Tap...	To...
Display	<ul style="list-style-type: none"> <li>Rotate the screen</li> <li>Change the screen resolution</li> <li>Dim the display after a period of time</li> <li>Set up an external display</li> </ul>
Pen & Tablet	<ul style="list-style-type: none"> <li>Set input mode to touch, pen or both</li> <li>Adjust touch for left-handedness</li> <li>Adjust sensitivity of flicks and gestures</li> <li>Enable swiping, dragging, and two-finger pinching</li> <li>Personalize your handwriting so that it can be recognized more accurately</li> </ul>
Audio	<ul style="list-style-type: none"> <li>Adjust speaker and microphone volume</li> <li>Suppress background noise</li> </ul>
Wireless	<ul style="list-style-type: none"> <li>Enable and disable Wi-Fi, Bluetooth® and Mobile Broadband (if installed)</li> <li>Choose to have wireless enabled or disabled when the system starts up</li> </ul>
Power	<ul style="list-style-type: none"> <li>Dim the display to save power</li> <li>Change power switch behavior to sleep, hibernate, or shut down</li> <li>Change the power plan to Power Saver</li> </ul>

## Set up wireless


One of the first things you'll want to do is set up for wireless communication. The CL900 supports:

- Wi-Fi (802.11a/b/g/n)
- Bluetooth
- Mobile Broadband (WWAN) with GPS (if installed)

### Step 1. Enable wireless from Motion Dashboard

1. From Windows Start menu, select **Motion Computing > Motion Dashboard**.
2. Select **Wireless**.
3. Select the check boxes next to the wireless networks you intend to use:
  - **Enable Bluetooth Internal Wireless**
  - **Enable 802.11 Internal Wireless**
  - **Enable Mobile Broadband with GPS** (if installed)

### Step 2. Set up 802.11 WiFi

1. From the notification area, select the wireless icon. 
2. Select the desired wireless network from the list of available networks.

### Step 3. Set up Mobile Broadband with GPS (optional)

If you purchased your CL900 with the optional Mobile Broadband module (WWAN), you can connect to high-speed 3G cellular networks worldwide. With the Mobile Broadband module and a data plan from one of several cellular network providers, you full mobile Internet access.

**NOTE:** Before you can connect to a mobile broadband network, you must have an active account with a cellular network carrier.

Set up mobile broadband as follows:


1. Download and install Motion Connection Manager according to the [mobile broadband instructions](#) from our corporate website.
2. Follow the steps on the web page to set up mobile broadband using Motion Connection Manager. The procedure walks you through setting up a network profile for your mobile broadband account.
3. Connect to your network using Connection Manager.

See the Connection Manager help for more information on mobile broadband, including using GPS.

### Step 4. Set up Bluetooth

The CL900 has a built-in Bluetooth adapter which provides short-range wireless connectivity with other Bluetooth enabled devices.

#### To add a Bluetooth device

1. From the notification area, tap the Bluetooth icon  and select **Add a Device**.
2. Make sure the device is discoverable according to Bluetooth device manufacturer's instructions. When a device is discoverable, it is visible to other Bluetooth devices within range (up to 33 feet or 10 meters).
3. Select the desired Bluetooth device from the list of available devices.
4. Follow the on screen instructions to complete the procedure.

**Tip:** Use the Motion Dashboard Wireless page to disable all wireless services conveniently.

## Using the cameras

Your CL900 comes equipped with two built-in cameras: a front-facing web camera and rear-facing documentation camera. Several vendors offer web cam and image capture software which you can use with the CL900 cameras. The CL900 comes with Photo Paint, which is an ExTOUCH user interface app that supports both web and documentation cameras.

## General tips

- Consider placing the taskbar on the left edge of the touch-screen. Press and hold the Start menu, select **Properties**, then select the **Taskbar location on screen**, select **Left**. Make sure **Lock the taskbar** is checked.
- To use the web or doc camera, first configure which camera to use from **All Programs>Microsoft Silverlight**.
- You can rest your hand on the display, but don't place heavy objects on top of the tablet.
- Store the pen in the pen drawer when not in use.
- When attaching the pen tether, loop one end of the tether through the pen, then loop the other end through tether attach point on the tablet.
- Clean fingerprints and marks from the display surface with a soft cloth. Don't spray liquids directly on the display.
- Avoid using tissues or paper towels on the display surface—they contain wood fibers that can scratch the display.
- If you need to use a cleaning solution, we maintain a [list of tested products](#) on our web site.
- Wipe up spills immediately.
- Avoid exposing the tablet to direct sunlight or extreme temperatures for long periods of time.
- Turn off or place the tablet in hibernation mode for airplane takeoff and landing.

## Battery tips

- Check the remaining charge while on battery power. Press the battery button on the left side of the tablet to display up to five battery gauge lights on the front. Five lights indicate a full charge; one light indicates about 20 percent of battery charge is remaining.
- Stop unnecessary background applications and processes.
- When not in use, turn off wireless adapters from the Motion Dashboard Wireless page.
- From Motion Dashboard Display tab, set the screen brightness of the display to automatically dim after so many minutes of inactivity.
- Set the power button to Sleep or Hibernate from Motion Dashboard Power page.
- For maximum conservation, use the Power saver power plan from Motion Dashboard Power page.
- When using mobile broadband, reduce how often the CL900 updates email and other Internet applications to, perhaps, once every half-hour.
- Disable mobile broadband where you know a signal is unavailable.

For more power tips, see [Motion Computing Tips and Tricks](#).

## Learn more

For detailed information about using your tablet:

- From Windows Start menu, select **All Programs > Motion Computing > Motion User's Guide**
- From the [list of user guides](#) on our web site
- When using Motion Dashboard or Motion Connection Manager applications, tap the help icon 